



Incroci is a modular rug created by joining braids produced with wool cords in mélange colours.

Each stripe has a width of about 20 cm and is composed of wool cords in different mélange colours, which are sewn together parallel to each other in predetermined colour combinations.

The stripes so obtained have different length and are joined together with Punto Zigzag to form the surface of the rug.

Between the different elements composing the

stripe, a wool cord is sewn perpendicularly.

The number of stripes varies according to the dimension of the rug.

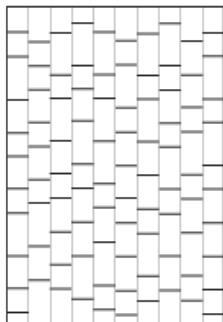
The octagonal version of Incroci is available in two variants:

- one featuring the same pattern of the rectangular and square versions,
- one with parallel stripes of different lengths.

The border of the rug is finished with a wool cord in the predominant colour of the rug.

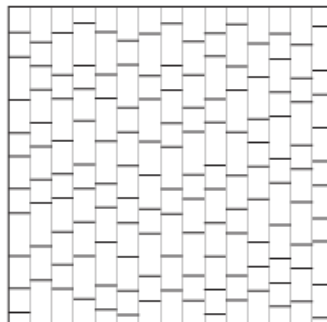
Up to a maximum of four colours can be chosen.

TANC02



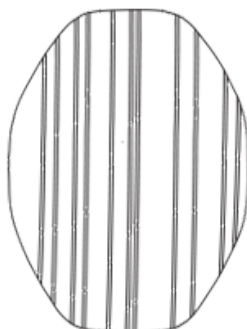
cm 200 x 300  
79" x 118"

TANC03



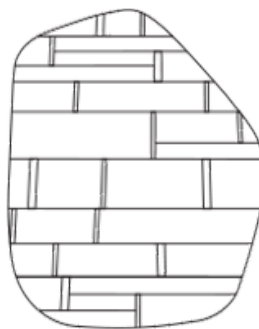
cm 300 x 300  
118" x 118"

TANC12



cm 300x400  
118"x157"

TANC13



cm 300x400  
118"x157"